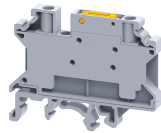


# CKT4SP



**connectwell**  
THE RIGHT CONNECTION

4 sq.mm Knife Type Disconnect & Test Terminal Blocks with Socket screws and with possibility of using Jumpers

These blocks are used measuring control and regulatory circuits. they provide a clear functional advantage for devices having utility instruments and associated transformers.in ckt4sp disconnection is achieved by lifting a lever which operates the knife contact. Specially designed socket headed screws act as test monitoring points in disconnecting & test Terminal blocks, also there is a possibility of jumpering between Terminal Blocks.

## TECHNICAL DATA

Rated Voltage	1000 V
Rated Current	28 A
Tightening Torque	0.5 Nm
Housing Material	Polymide
Product Function	Knife Type Disconnect and Test
Mounting Possibility	DIN 32/DIN 35/DIN 35-15 Rail
Screw Size	M3
Operated by	Screwdriver
Rated Surge Voltage	8 V
Pollution Degree	3

## CONNECTION DATA

Conductor Cross Section Stranded min.	0.2 mm <sup>2</sup>
Conductor Cross Section Stranded max.	4 mm <sup>2</sup>
Conductor Cross Section AWG/Kcmil min	24 AWG
Conductor Cross Section AWG/Kcmil max	10 AWG
Conductor Cross Section Stranded with Ferrule/Lug min	0.2 mm <sup>2</sup>
Conductor Cross Section Stranded with Ferrule/Lug max	6 mm <sup>2</sup>
2 Conductors with same Cross Section Stranded min	0.2 mm <sup>2</sup>
2 Conductor with same Cross Section Stranded max	2.5 mm <sup>2</sup>
Conductor Cross Section Solid min	0.2 mm <sup>2</sup>
Conductor Cross Section Solid max	6 mm <sup>2</sup>
2 Conductors with same Cross Section Stranded with TWIN Ferrule/Lug min	0.2 mm <sup>2</sup>
2 Conductor with same Cross Section Stranded with TWIN Ferrule/Lug max	2.5 mm <sup>2</sup>
Stripping Length	8 mm
Internal Cylindrical Gauge	A4

## DIMENSIONS

Height with DIN 15 x 5 mm rail	46 mm
Height with DIN 32 rail	51.5 mm
Height with DIN 35 x 15 mm rail	53.5 mm
Height with DIN 35 x 7.5 mm rail	46 mm
Length	58.5 mm
Width (Thickness)	6 mm

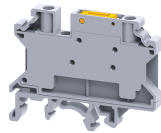
## ORDERING INFORMATION

CAT. NO.	DESCRIPTION	STD. PACK
CKT4SP	4 sq.mm Knife Type Disconnect & Test Terminal Blocks with Socket screws and Jumper Possibility in Grey colour	50
CKT4SPBU	4 sq.mm Knife Type Disconnect & Test Terminal Blocks with Socket screws and Jumper Possibility in Blue colour	50

## ACCESSORIES

IMAGES	CAT. NO.	DESCRIPTION	STD. PACK
	CA501-1M	Din 32 Rail unslotted 1 meter	50
	CA501-1M-S	Din 32 Rail slotted 1 meter	50
	CA501-2M	Din 32 Rail unslotted 2 meter	50
	CA501-2M-S	Din 32 Rail slotted 2 meter	50
	CA701-1M	Din 35 Rail unslotted 1 meter	50
	CA701-2M	Din 35 Rail unslotted 2 meter	50
	CA701-2M-S	Din 35 Rail slotted 2 meter	50
	CA701-1M-S	Din 35 Rail slotted 1 meter	50
	CA701-15-1M	Din 35 Rail 15 deep unslotted 1 meter	50
	CA701-15-1M-S	Din 35 Rail 15 deep slotted 1 meter	50
	CA701-15-2M	Din 35 Rail 15 deep unslotted 2 meter	50
	CA701-15-2M-S	Din 35 Rail 15 deep slotted 2 meter	50
	CA702	End Clamp in Polyamide 66 suitable for Din 32 / Din 35 / Din 35-15 Rails	50
	CA802	End Clamp in Polyamide suitable for Din 35 / Din 35-15 Rails	50
	CA722/2	Pre Assembled Shorting Link assemblies with 2 poles	100
	CA722/3	Pre Assembled Shorting Links assemblies with 3 poles	100
	CA722/4	Pre Assembled Shorting Links assemblies with 4 poles	100
	CA722/5	Pre Assembled Shorting Links assemblies with 5 poles	100
	CA722/10	Pre Assembled Shorting Links assemblies with 10 poles	10
	CA722/100	Pre Assembled Shorting Links assemblies with 100 poles	10

# CKT4SP



**connectwell**  
THE RIGHT CONNECTION

## ACCESSORIES

IMAGES	CAT. NO.	DESCRIPTION	STD. PACK
	CA742/2	Insulated Pre assembled Shorting Link for 2 way shorting	100
	CA742/3	Insulated Pre assembled Shorting Link for 3 way shorting	100
	CA742/4	Insulated Pre assembled Shorting Link for 4 way shorting	100
	CA742/10	Insulated Pre assembled Shorting Link for 10 way shorting	10
	CA742/100	Insulated Pre assembled Shorting Link for 100 way shorting	10
	CA714/2	External Comb Type Shorting Link Available in 2 pole	100
	CA714/3	External Comb Type Shorting Link Available in 3 pole	100
	CA714/4	External Comb Type Shorting Link Available in 4 pole	100
	CA714/10	External Comb Type Shorting Link Available in 10 pole	20
	CA703/1	Permanent Shorting Link for 2 way shorting	100
	CA704/1	Permanent Shorting Link for 3 way shorting	100
	CA705/1	Permanent Shorting Link for 4 way shorting	100
	CA732/10	Permanent Shorting Link for 10 way shorting	100
	CA732/10-A	Permanent Shorting Link (Breakable) for 10 way shorting	100
	CA732/100	Permanent Shorting Link for 100 way shorting	100
	CA707/S/Q/01	Shorting Sleeve and Screw	100
	CA509/K6	Blank Marking Tag	100
	SCS0.6/3.5	Electricians Screwdriver for slotted screws	10

## APPROVALS



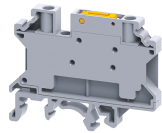
## NOTES

This Terminal can also be mounted on Din15 rail i.e CA601

## RATINGS AS PER STANDARDS

STANDARDS	UL 1059	IEC/EN60947-7-1	CSA C.22.2 No:158
Approvals	UL	CE	CSA
Conductor Cross Section Stranded min.	24 AWG	0.2 mm <sup>2</sup>	24 AWG
Conductor Cross Section Stranded max.	10 AWG	4 mm <sup>2</sup>	10 AWG
Rated Voltage	600 V	1000 V	600 V

CKT4SP



RATINGS AS PER STANDARDS

Rated Current	30 A	28 A	30 A
Tightening Torque	4.5 lb-in	0.5 Nm	4.5 lb-in