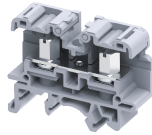


CSB5/N5USH



connectwell
THE RIGHT CONNECTION

M5 sized Stud Type hinge Terminal Blocks, suitable for operation with screwdriver and nut driver.

This Terminal Block is preferred for applications where the connections are subjected to severe vibrations.

The wire is crimped to a ring / fork type lug (ferrule) and is screwed on to the flat current bar on the Terminal Block. cross connection can be achieved with the aid of internal shorting links.

It is recommended to use Protective Covers in transparent plastic to fully shroud these assemblies. Wiring can be done with the help of screw driver as well as nut driver.

TECHNICAL DATA

Rated Voltage	1000 V
Rated Current	76 A
Tightening Torque	2 Nm
Housing Material	Polymide
Standard Colour	Grey
Product Function	Feed Through
Wire Entry Orientation	Side
Mounting Possibility	DIN 32/DIN 35/DIN 35-15 Rail
Screw Size	M5
Stud Size	M5
Operated by	Screw/Nut driver
Rated Surge Voltage	8 KV
Pollution Degree	3

CONNECTION DATA

Conductor Cross Section Stranded min.	1.5 mm ²
Conductor Cross Section Stranded max.	16 mm ²
Conductor Cross Section AWG/Kcmil min	16 AWG
Conductor Cross Section AWG/Kcmil max	4 AWG
Conductor Cross Section Stranded with Ferrule/Lug min	1.5 mm ²
Conductor Cross Section Stranded with Ferrule/Lug max	16 mm ²
2 Conductors with same Cross Section Stranded min	1.5 mm ²
2 Conductor with same Cross Section Stranded max	10 mm ²
Conductor Cross Section Solid min	1.5 mm ²
Stripping Length	mm

DIMENSIONS

Height with DIN 32 rail	43.3 mm
Height with DIN 35 x 15 mm rail	45.9 mm
Height with DIN 35 x 7.5 mm rail	38.4 mm
Length	49 mm
Width (Thickness)	13 mm

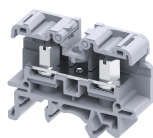
ORDERING INFORMATION

CAT. NO.	DESCRIPTION	STD. PACK
CSB5/N5USH	16 sq.mm M5 Stud Type Hinge Screw/Nut driver operated Terminal Block in Grey colour	100

ACCESSORIES

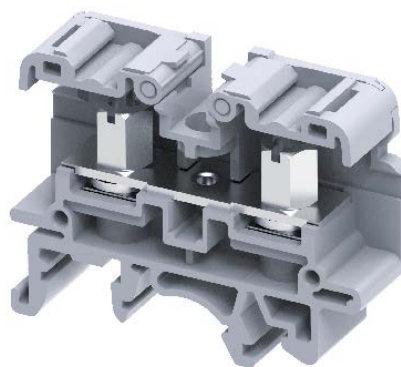
IMAGES	CAT. NO.	DESCRIPTION	STD. PACK
	CA501-1M	Din 32 Rail unslotted 1 meter	50
	CA501-1M-S	Din 32 Rail slotted 1 meter	50
	CA501-2M	Din 32 Rail unslotted 2 meter	50
	CA501-2M-S	Din 32 Rail slotted 2 meter	50
	CA701-1M	Din 35 Rail unslotted 1 meter	50
	CA701-2M	Din 35 Rail unslotted 2 meter	50
	CA701-2M-S	Din 35 Rail slotted 2 meter	50
	CA701-1M-S	Din 35 Rail slotted 1 meter	50
	CA701-15-1M	Din 35 Rail 15 deep unslotted 1 meter	50
	CA701-15-1M-S	Din 35 Rail 15 deep slotted 1 meter	50
	CA701-15-2M	Din 35 Rail 15 deep unslotted 2 meter	50
	CA701-15-2M-S	Din 35 Rail 15 deep slotted 2 meter	50
	CA702	End Clamp in Polyamide 66 suitable for Din 32 / Din 35 / Din 35-15 Rails	50
	CA802	End Clamp in Polyamide suitable for Din 35 / Din 35-15 Rails	50
	EPCBS3U	End Plate in Grey Colour	50
	CA514/2-2	Insulated Removable Shorting Link available in 2 Pole	100
	CA514/2-3	Insulated Removable Shorting Link available in 3 Pole	50
	CA514/2-4	Insulated Removable Shorting Link available in 4 Pole	50
	CA514/4-2	Ring Type Shorting link 2 Pole	100
	CA514/4-3	Ring Type Shorting link 2 Pole	50
	CA514/4-4	Ring Type Shorting link 2 Pole	50

CSB5/N5USH


connectwell
 THE RIGHT CONNECTION

ACCESSORIES

IMAGES	CAT. NO.	DESCRIPTION	STD. PACK
	CA512/2-2	Removable Shorting Link available in 2 Pole	100
	CA512/2-3	Removable Shorting Link available in 3 Pole	50
	CA512/2-4	Removable Shorting Link available in 4 Pole	50
	CA512/4-2	Insulated Ring Type Shorting link 2 Pole	100
	CA512/4-3	Insulated Ring Type Shorting link 2 Pole	50
	CA512/4-4	Insulated Ring Type Shorting link 2 Pole	50
	CA772/2	Pre Assembled Shorting Link Assemblies with 2 poles	100
	CA772/3	Pre Assembled Shorting Link Assemblies with 3 poles	100
	CA772/4	Pre Assembled Shorting Link Assemblies with 4 poles	100
	CA772/10	Pre Assembled Shorting Link Assemblies with 10 poles	10
	SCS1/5.5	Electricians Screwdriver for slotted screws	10
	CA509/K10	Marking Tag Blank suitable for CTS10U / CGT10U / CGT10N / CHV10U / CTS10USC / STH4 / STH4DT / STH4DTSH / CSC10T Terminal Blocks	100



APPROVALS



RATINGS AS PER STANDARDS

STANDARDS	IEC/EN60947-7-1	UL 1059	CSA C.22.2 No:158
Approvals	CE	UL	CSA
Conductor Cross Section Stranded min.	1.5 mm ²	16 AWG	16 AWG
Conductor Cross Section Stranded max.	16 mm ²	4 AWG	4 AWG
Rated Voltage	1000 V	600 V	600 V
Rated Current	76 A	85 A	85 A
Tightening Torque	2 Nm	25 lb-in	25 lb-in