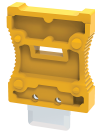


CIP



connectwell
THE RIGHT CONNECTION

Isolation plug for disconnect function

This is the isolation plug which is used for disconnection application with Component carrier terminal block.

PRODUCT SPECIFICATION

Height	26 mm
Length	17.45 mm
Rated Current	10 A
Suitable For	CCC4U and CXCC4
Width (Thickness)	5.4 mm

ORDERING INFORMATION

CAT. NO.	DESCRIPTION	STD. PACK
CIP	Isolation plug for component carrier terminal block	50

NOTES

To be used with Component Carrier Terminal Blocks CCC4U & CXCC4 as isolation Plug