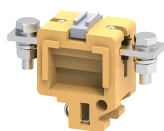


# CTS35L



**connectwell**  
THE RIGHT CONNECTION

50 sq.mm Bus Bar Type Terminal Blocks with locking nut.

These Terminal Blocks are preferred for applications using wires of a large cross section. The wire is crimped to a ring / fork type lug (ferrule) and is screwed on to the flat current bar on the Terminal Block. The range includes Terminal Blocks for wire sizes from 16 sq.mm to 120 sq.mm. CTS35LS Terminal Blocks have a threading in the current bar, eliminating the need of locking nuts.

Partition / Isolation Plate must be used with every Terminal Block. The Protective Cover is designed to be mounted on a specially designed slot in the Partition Plate.

## TECHNICAL DATA

|                        |              |
|------------------------|--------------|
| Rated Voltage          | 1000 V       |
| Rated Current          | 150 A        |
| Tightening Torque      | 3 Nm         |
| Housing Material       | Melamine     |
| Product Function       | Feed Through |
| Wire Entry Orientation | Side Entry   |
| Mounting Possibility   | DIN 32 Rail  |
| Screw Size             | M6           |
| Operated by            | Nut Driver   |
| Rated Surge Voltage    | 8 KV         |
| Pollution Degree       | 3            |

## CONNECTION DATA

|   |                    |
|---|--------------------|
| Conductor Cross Section Stranded min.                 | 16 mm <sup>2</sup> |
| Conductor Cross Section Stranded max.                 | 50 mm <sup>2</sup> |
| Conductor Cross Section AWG/Kcmil min                 | 8 AWG              |
| Conductor Cross Section AWG/Kcmil max                 | 2 AWG              |
| Conductor Cross Section Stranded with Ferrule/Lug min | 16 mm <sup>2</sup> |
| Conductor Cross Section Stranded with Ferrule/Lug max | 50 mm <sup>2</sup> |
| 2 Conductors with same Cross Section Stranded min     | 16 mm <sup>2</sup> |
| 2 Conductor with same Cross Section Stranded max      | 50 mm <sup>2</sup> |
| Stripping Length                                      | 12 mm              |

## DIMENSIONS

|                         |       |
|-------------------------|-------|
| Height with DIN 32 rail | 52 mm |
| Length                  | 75 mm |
| Width (Thickness)       | 28 mm |

## ORDERING INFORMATION

| CAT. NO. | DESCRIPTION  | STD. PACK |
|----------|--|-----------|
| CTS35L   | 50 sq.mm Bus Bar Type Terminal Block in Khaki/Beige colour | 10        |
| CTS35LR  | 50 sq.mm Bus Bar Type Terminal Block in Red colour         | 10        |
| CTS35LY  | 50 sq.mm Bus Bar Type Terminal Block in Yellow colour      | 10        |

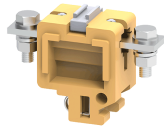
## ORDERING INFORMATION

| CAT. NO. | DESCRIPTION  | STD. PACK |
|----------|--|-----------|
| CTS35LBU | 50 sq.mm Bus Bar Type Terminal Block in Blue colour  | 10        |
| CTS35LBK | 50 sq.mm Bus Bar Type Terminal Block in Black colour | 10        |

## ACCESSORIES

| IMAGES | CAT. NO.   | DESCRIPTION  | STD. PACK |
|--------|------------|--|-----------|
|        | CA501-1M   | Din 32 Rail unslotted 1 meter  | 50        |
|        | CA501-1M-S | Din 32 Rail slotted 1 meter  | 50        |
|        | CA501-2M   | Din 32 Rail unslotted 2 meter  | 50        |
|        | CA501-2M-S | Din 32 Rail slotted 2 meter  | 50        |
|        | CA102      | End Clamp in Polyamide suitable for Din32 / Din35 / Din35-15 Rails       | 50        |
|        | CA502      | End Clamp in Steel suitable for Din 32 Rail                              | 50        |
|        | CA702      | End Clamp in Polyamide 66 suitable for Din 32 / Din 35 / Din 35-15 Rails | 50        |
|        | CTSEP4     | Partition Plate in Khaki / Beige colour                                  | 50        |
|        | EP4P       | Partition Plate in Polyamide 6.6 Grey colour                             | 50        |
|        | CTSEP4LO   | Locking Support for partition plate                                      | 10        |
|        | CA796/2    | Permanent Shorting Link for 2 way shorting                               | 10        |
|        | CA796/3    | Permanent Shorting Link for 3 way shorting                               | 10        |
|        | CA509/K2B4 | Blank Marking Tag  | 100       |

CTS35L



**connectwell**  
THE RIGHT CONNECTION

#### ACCESSORIES

| IMAGES | CAT. NO. | DESCRIPTION             | STD. PACK |
|--------|----------|-------------------------|-----------|
|        | CTSPC3-1 | 90 mm Protective Cover  | 10        |
|        | CTSPC3-2 | 210 mm Protective Cover | 10        |
|        | CTSPC2-1 | 100 mm Protective Cover | 10        |
|        | CTSPC2-2 | 190 mm Protective Cover | 10        |

#### APPROVALS



#### RATINGS AS PER STANDARDS

| STANDARDS                             | CSA C.22.2 No:158 | IEC/EN60947-7-1    |
|---------------------------------------|-------------------|--------------------|
| Approvals                             | CSA               | CE                 |
| Conductor Cross Section Stranded min. | 8 AWG             | 16 mm <sup>2</sup> |
| Conductor Cross Section Stranded max. | 2 AWG             | 50 mm <sup>2</sup> |
| Rated Voltage                         | 600 V             | 1000 V             |
| Rated Current                         | 145 A             | 150 A              |
| Tightening Torque                     | 27 lb-in          | 3 Nm               |