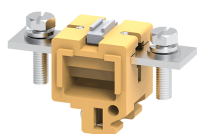


CTS70LS



connectwell
THE RIGHT CONNECTION

70 sq.mm Bus Bar Type Terminal Blocks with tapped current bars.

These Terminal Blocks are preferred for applications using wires of a large cross section. The wire is crimped to a ring / fork type lug (ferrule) and is screwed on to the flat current bar on the Terminal Block. CTS70LS Terminal Blocks have a threading in the current bar, eliminating the need of locking nuts. Partition / Isolation Plate must be used with every Terminal Block. The Protective Cover is designed to be mounted on a specially designed slot in the Partition Plate.

TECHNICAL DATA

| | |
|------------------------|--------------------------|
| Rated Voltage | 1000 V |
| Rated Current | 192 A |
| Tightening Torque | 10 Nm |
| Housing Material | Melamine |
| Product Function | Feed Through |
| Wire Entry Orientation | Side Entry |
| Mounting Possibility | DIN 32 Rail |
| Screw Size | M8 |
| Operated by | Screwdriver / Nut Driver |
| Rated Surge Voltage | 8 KV |
| Pollution Degree | 3 |

CONNECTION DATA

| | |
|---|--------------------|
| Conductor Cross Section Stranded min. | 35 mm ² |
| Conductor Cross Section Stranded max. | 70 mm ² |
| Conductor Cross Section AWG/Kcmil min | 8 AWG |
| Conductor Cross Section AWG/Kcmil max | 2/0 AWG |
| Conductor Cross Section Stranded with Ferrule/Lug min | 35 mm ² |
| Conductor Cross Section Stranded with Ferrule/Lug max | 70 mm ² |
| 2 Conductors with same Cross Section Stranded min | 35 mm ² |
| 2 Conductor with same Cross Section Stranded max | 70 mm ² |
| Stripping Length | 18 mm |

DIMENSIONS

| | |
|-------------------------|-------|
| Height with DIN 32 rail | 52 mm |
| Length | 92 mm |
| Width (Thickness) | 40 mm |

ORDERING INFORMATION

| CAT. NO. | DESCRIPTION | STD. PACK |
|-----------|--|-----------|
| CTS70LS | 70 sq.mm Bus Bar Type Terminal Block in Khaki/Beige colour | 10 |
| CTS70LSR | 70 sq.mm Bus Bar Type Terminal Block in Red colour | 10 |
| CTS70LSY | 70 sq.mm Bus Bar Type Terminal Block in Yellow colour | 10 |
| CTS70LSBU | 70 sq.mm Bus Bar Type Terminal Block in Blue colour | 10 |

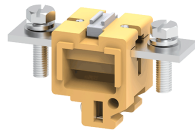
ORDERING INFORMATION

| CAT. NO. | DESCRIPTION | STD. PACK |
|-----------|--|-----------|
| CTS70LSBK | 70 sq.mm Bus Bar Type Terminal Block in Black colour | 10 |

ACCESSORIES

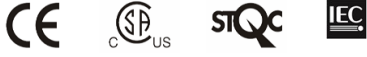
| IMAGES | CAT. NO. | DESCRIPTION | STD. PACK |
|--------|------------|--|-----------|
| | CA501-1M | Din 32 Rail unslotted 1 meter | 50 |
| | CA501-1M-S | Din 32 Rail slotted 1 meter | 50 |
| | CA501-2M | Din 32 Rail unslotted 2 meter | 50 |
| | CA501-2M-S | Din 32 Rail slotted 2 meter | 50 |
| | CA102 | End Clamp in Polyamide suitable for Din32 / Din35 / Din35-15 Rails | 50 |
| | CA502 | End Clamp in Steel suitable for Din 32 Rail | 50 |
| | CA702 | End Clamp in Polyamide 66 suitable for Din 32 / Din 35 / Din 35-15 Rails | 50 |
| | CTSEP4 | Partition Plate in Khaki / Beige colour | 50 |
| | EP4P | Partition Plate in Polyamide 6.6 Grey colour | 50 |
| | CTSEP4LO | Locking Support for partition plate | 10 |
| | CA797/2 | Permanent Shorting Link for 2 way shorting | 10 |
| | CA797/3 | Permanent Shorting Link for 3 way shorting | 10 |
| | CA509/K2B4 | Blank Marking Tag | 100 |
| | CTSPC3-1 | 90 mm Protective Cover | 10 |
| | CTSPC3-2 | 210 mm Protective Cover | 10 |
| | CTSPC2-1 | 100 mm Protective Cover | 10 |
| | CTSPC2-2 | 190 mm Protective Cover | 10 |

CTS70LS



connectwell
THE RIGHT CONNECTION

APPROVALS



RATINGS AS PER STANDARDS

| STANDARDS | CSA C.22.2 No:158 | IEC/EN60947-7-1 |
|---------------------------------------|-------------------|--------------------|
| Approvals | CSA | CE |
| Conductor Cross Section Stranded min. | 8 AWG | 35 mm ² |
| Conductor Cross Section Stranded max. | 2/0 AWG | 70 mm ² |
| Rated Voltage | 600 V | 1000 V |
| Rated Current | 250 A | 192 A |
| Tightening Torque | 87 lb-in | 10 Nm |