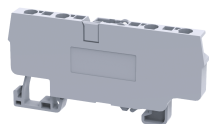


CXCC2.5/4


connectwell
 THE RIGHT CONNECTION

2.5 sq.mm Component carrier spring clamp terminal block

These blocks are component carrier base. Various pluggable component carriers can be installed easily.

TECHNICAL DATA

Rated Voltage	1000 V
Rated Current	* A
Housing Material	Polyimide
Standard Colour	Grey
Product Function	Feed Through
Wire Entry Orientation	Top
Mounting Possibility	DIN 35/DIN 35-15 Rail
Rated Surge Voltage	4 V
Pollution Degree	3

CONNECTION DATA

Conductor Cross Section Stranded min.	0.2 mm ²
Conductor Cross Section Stranded max.	2.5 mm ²
Conductor Cross Section AWG/Kcmil min	22 AWG
Conductor Cross Section AWG/Kcmil max	12 AWG
Stripping Length	8 mm




DIMENSIONS

Height with DIN 35 x 15 mm rail	45.2 mm
Height with DIN 35 x 7.5 mm rail	37.6 mm
Length	74.7 mm
Width (Thickness)	5 mm



ORDERING INFORMATION

CAT. NO.	DESCRIPTION	STD. PACK
CXCC2.5/4	2.5 sq. mm 4 Wire Component Carrier compact spring clamp Terminal Block in Grey colour	50

ACCESSORIES

IMAGES	CAT. NO.	DESCRIPTION	STD. PACK
	CA103	EndClamp in Polyamide suitable for Din 35/Din 35-15 rails	50
	CA702	End Clamp in Polyamide 66 suitable for Din 32 / Din 35 / Din 35-15 Rails	50
	CA802	End Clamp in Polyamide suitable for Din 35 / Din 35-15 Rails	50

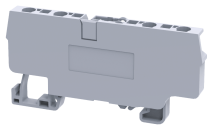
ACCESSORIES

IMAGES	CAT. NO.	DESCRIPTION	STD. PACK
	JX2.5/2	Shorting Link for 2.5 sq mm series	100
	JX2.5/3	Shorting Link for 2.5 sq mm series	50
	JX2.5/4	Shorting Link for 2.5 sq mm series	50
	JX2.5/5	Shorting Link for 2.5 sq mm series	50
	JX2.5/6	Shorting Link for 2.5 sq mm series	50
	JX2.5/7	Shorting Link for 2.5 sq mm series	10
	JX2.5/8	Shorting Link for 2.5 sq mm series	10
	JX2.5/10	Shorting Link for 2.5 sq mm series	10
	SCS0.5/3	Electricians Screwdriver for slotted screws	10

APPROVALS



CXCC2.5/4



connectwell
THE RIGHT CONNECTION

RATINGS AS PER STANDARDS

STANDARDS	IEC/EN60947-7-2		
Approvals	CE		
Conductor Cross Section Stranded min.	0.2 mm ²		
Conductor Cross Section Stranded max.	2.5 mm ²		
Rated Voltage	1000 V		
Rated Current	* A		