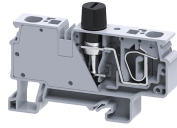


CXVFL


**connectwell**  
 THE RIGHT CONNECTION

## 6 sq.mm Spring Clamp with led Vertical Fuse Terminal Blocks

The Spring Clamp is operated by using a screw driver to provide an access to the wire through an opening in the spring clamp. The inserted wire gets clamped on to the current bar when the screw driver is removed.

### TECHNICAL DATA

Rated Voltage	1000 V
Rated Current	10 A
Housing Material	Polymide
Standard Colour	Grey
Product Function	Single Level Fuse
Wire Entry Orientation	Top
Mounting Possibility	DIN 35/DIN 35-15 Rail
Operated by	Screw Driver
Rated Surge Voltage	8 KV
Pollution Degree	3

### CONNECTION DATA

Conductor Cross Section Stranded min.	0.2 mm <sup>2</sup>
Conductor Cross Section Stranded max.	6 mm <sup>2</sup>
Conductor Cross Section AWG/Kcmil min	24 AWG
Conductor Cross Section AWG/Kcmil max	8 AWG
Stripping Length	10 mm

### DIMENSIONS

Height with DIN 35 x 15 mm rail	50.5 mm
Height with DIN 35 x 7.5 mm rail	43 mm
Length	75 mm
Width (Thickness)	12 mm

### FUSE SPECIFICATIONS

Fuse Type	Glass type fuse
Fuse Size	5 X 20, 5 X 25, 6.3 X 32 mm
Fuse Current Rating	10 A

### ORDERING INFORMATION

CAT. NO.	DESCRIPTION	STD. PACK
CXVFAL12V	6 sqmm 5x20mm Fuse Terminal Block with indication suitable for 12V in Grey colour.	50
CXVFAL24V	6 sqmm 5x20mm Fuse Terminal Block with indication suitable for 24V in	50
CXVFAL48V	6 sqmm 5x20mm Fuse Terminal Block with indication suitable for 48V in	50
CXVFAL60V	6 sqmm 5x20mm Fuse Terminal Block with indication suitable for 60V in	50

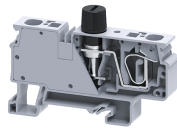
### ORDERING INFORMATION

CAT. NO.	DESCRIPTION	STD. PACK
CXVFAL230V	6 sqmm 5x20mm Fuse Terminal Block with indication suitable for 230V in	50
CXVFBL12V	6 sqmm 5X25mm Fuse Terminal Block with indication suitable for 12V in Grey colour.	50
CXVFBL24V	6 sqmm 5X25mm Fuse Terminal Block with indication suitable for 24V in Grey colour.	50
CXVFBL48V	6 sqmm 5X25mm Fuse Terminal Block with indication suitable for 48V in Grey colour.	50
CXVFBL60V	6 sqmm 5X25mm Fuse Terminal Block with indication suitable for 60V in Grey colour.	50
CXVFBL230V	6 sqmm 5X25mm Fuse Terminal Block with indication suitable for 230V in Grey colour.	50
CXVFCL12V	6 sq.mm 6.3 x 32mm Fuse Terminal Block with indication suitable for 12 V in Grey colour	50
CXVFCL24V	6 sq.mm 6.3 x 32mm Fuse Terminal Block with indication suitable for 24 V in Grey colour	50
CXVFCL48V	6 sq.mm 6.3 x 32mm Fuse Terminal Block with indication suitable for 48 V in Grey colour	50
CXVFCL60V	6 sq.mm 6.3 x 32mm Fuse Terminal Block with indication suitable for 60 V in Grey colour	50
CXVFCL230V	6 sq.mm 6.3 x 32mm Fuse Terminal Block with indication suitable for 230 V in Grey colour	50




### ACCESSORIES

IMAGES	CAT. NO.	DESCRIPTION	STD. PACK
	CA701-1M	Din 35 Rail unslotted 1 meter	50
	CA701-2M	Din 35 Rail unslotted 2 meter	50
	CA701-2M-S	Din 35 Rail slotted 2 meter	50
	CA701-1M-S	Din 35 Rail slotted 1 meter	50
	CA701-15-1M	Din 35 Rail 15 deep unslotted 1 meter	50
	CA701-15-1M-S	Din 35 Rail 15 deep slotted 1 meter	50
	CA701-15-2M	Din 35 Rail 15 deep unslotted 2 meter	50
	CA701-15-2M-S	Din 35 Rail 15 deep slotted 2 meter	50
	CA103	EndClamp in Polyamide suitable for Din 35/Din 35-15 rails	50
	CA702	End Clamp in Polyamide 66 suitable for Din 32 / Din 35 / Din 35-15 Rails	50
	CA802	End Clamp in Polyamide suitable for Din 35 / Din 35-15 Rails	50

CXVFL

**connectwell**  
THE RIGHT CONNECTION

## ACCESSORIES

IMAGES	CAT. NO.	DESCRIPTION	STD. PACK
	JX4/2	Shorting Link for 6 mm wide TB	100
	JX4/3	Shorting Link for 6 mm wide TB	50
	JX4/4	Shorting Link for 6 mm wide TB	50
	JX4/5	Shorting Link for 6 mm wide TB	50
	JX4/8	Shorting Link for 6 mm wide TB	10
	JX4/10	Shorting Link for 6 mm wide TB	10
	JX4/16	Shorting Link for 6 mm wide TB	10
	CA509/K6	Blank Marking Tag	100
	SCS0.6/3.5	Electricians Screwdriver for slotted screws	10

## APPROVALS



## NOTES

For shorting 2 no of CXVF we require 4 pole shorting link i.e., JX4/4

## RATINGS AS PER STANDARDS

STANDARDS	UL 1059	CSA C.22.2 No:158	IEC/EN60947-7-1
Approvals	UL	CSA	CE
Conductor Cross Section Stranded min.	24 AWG	24 AWG	0.2 mm <sup>2</sup>
Conductor Cross Section Stranded max.	8 AWG	8 AWG	6 mm <sup>2</sup>
Rated Voltage	600 V	600 V	1000 V
Rated Current	20 A	20 A	10 A