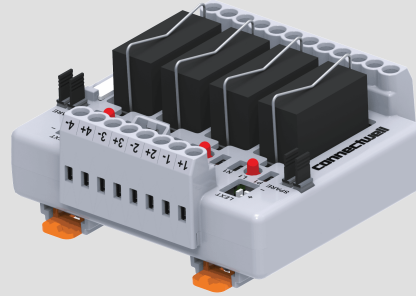


CIMRE1SS4/2 4A/OM

connectwell
THE RIGHT CONNECTION

Relay Module 1CO 4 Channel 24VAC (SPDT)

Fully-enclosed IP20 rated design
Custom configurations up to 32 channels
Long Tail Jumpers.
Ergonomic for wiring ease
High quality standards and approvals
Long-life laser marking
Additional all-axis marking provision
Over voltage category: III
Pollution degree :2
Option to select Pluggable/Soldered Relays
Standard and reverse type marking option available.
Low Coil Drive Current (4.7 mA to 100 mA).
LED indication to denote relay actuation.
Freewheeling diode across relay coil.



TECHNICAL DATA

Bussing Possibility	By using spare jumpers.*****
Supply Voltage Indication	3mm Red LED
Relay Protection Method	Using 1N4007 Free Wheeling Diode
Ambient Operating Temperature	-20 to 50 °C
Mounting Possibility	DIN 35/DIN 35-15 Rail
Housing Material	PC
Housing Colour	Grey
Rated Input voltage	24 VAC
Rated output Current/channel	10 A

RELAY GENERAL SPECIFICATIONS

Relay Type	Electromechanical Relay
Relay Make / Manufacturer	Omron-G2R1 AC24
Dielectric Strength	Between Coil & Contact - 5000VAC Between Contacts - 1000VAC
Insulation Resistance	1000 Mohm
Relay Approvals	UL,CSA, VDE, SEMKO

RELAY INPUT / COIL SPECIFICATIONS

Nominal Operating Voltage	24 VAC
Nominal Input Current	46.5 mA
Maximum Operating Voltage	26.4 VAC
Must Operate Voltage	19.2 VAC
Must Release Voltage	7.2 VAC
Nominal Input Power	0.9 VA
Coil Resistance	260 Ω

RELAY OUTPUT/CONTACT SPECIFICATIONS

Contact Type	SPDT - 1CO
--------------	------------

RELAY OUTPUT/CONTACT SPECIFICATIONS

Contact Material	Ag-alloy (Cd free)
Contact Resistance	30 mΩ max.
Rated Contact Current (Resistive Load)	10 A
Load Voltage Range	250VAC/30VDC
Maximum Switching Voltage	380VAC/125VDC V
Maximum Operating Frequency	18,000 Opr./Hr (Mechanically)
Turn-Off Time	10ms (Without Diode)
Turn-On Time (0 Cross Turn On)	15ms (Without Diode)






CONNECTION SPECIFICATIONS

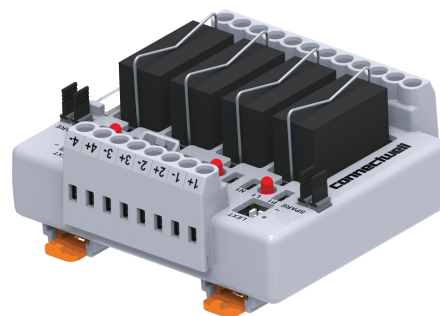
Type of Connection	Screw Connection
Min. Wire Size	0.5 mm²
Max. Wire Size	2.5 mm²
Min. Wire Size(AWG)	20 AWG
Max. Wire Size(AWG)	12 AWG
Screw Size	M2.5
Wire Stripping Length	8 mm
Torque	0.4 Nm
Torque	3.5 lb-in

ORDERING INFORMATION

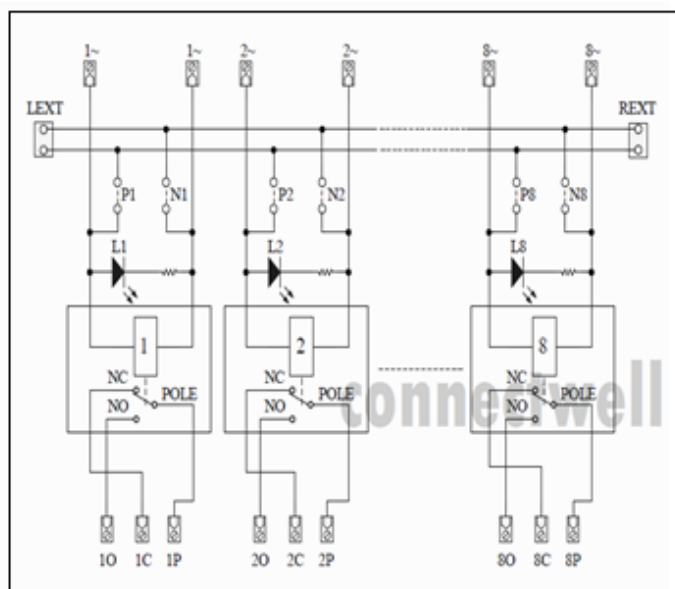
CAT. NO.	DESCRIPTION	NO. OF CHN.	DIM. DET.	STD. PACK
CIMRE1SS4/24A/OM	1CO 4CH 24VAC CW Relay Module With Base (Pluggable Relay) Rail Mount	4	84.7 x 77 x 54	1
CIMRE1S4/24A/OM	1CO 4CH 24VAC CW Relay Module With Soldered Relay Rail Mount	4	84.7 x 77 x 50	1

ACCESSORIES

IMAGES	CAT. NO.	DESCRIPTION	STD. PACK
	CA701-1M	Din 35 Rail unslotted 1 meter	50
	CA701-2M	Din 35 Rail unslotted 2 meter	50
	CA701-2M-S	Din 35 Rail slotted 2 meter	50
	CA701-1M-S	Din 35 Rail slotted 1 meter	50
	CA701-15-1M	Din 35 Rail 15 deep unslotted 1 meter	50
	CA701-15-1M-S	Din 35 Rail 15 deep slotted 1 meter	50
	CA701-15-2M	Din 35 Rail 15 deep unslotted 2 meter	50
	CA701-15-2M-S	Din 35 Rail 15 deep slotted 2 meter	50
	SCS0.5/3	Electricians Screwdriver for slotted screws	10
	GMH8	Group Marker suitable for mounting on CA103	100
	IMACC/CIMRE/EXT	Extension Cable for CIMRE	50



CIRCUIT DIAGRAM



NOTES

***Module with Other Coil Voltage like 6 VDC, 48 VDC, 24 VAC, etc. are available on request. All values in the are the initial values at 23°C.

**** Module is Factory-built common negative. To change to common positive move the Jumpers to PC.

***** To use as a standard module without bussing put the jumpers into spare parking space available on Module.

All values in the are the initial values at 23°C.