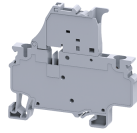


CXF4



**connectwell**  
THE RIGHT CONNECTION

4 sq.mm Spring Clamp Fuse compact Terminal Blocks

The Spring Clamp is operated by using a screw driver to provide an access to the wire through an opening in the spring clamp. The inserted wire gets clamped on to the current bar when the screw driver is removed.

**TECHNICAL DATA**

Rated Voltage	1000 V
Rated Current	10 A
Housing Material	Polymide
Product Function	Single Level Fuse
Wire Entry Orientation	Top
Mounting Possibility	DIN 35/DIN 35-15 Rail
Operated by	Screw Driver
Rated Surge Voltage	8 KV
Pollution Degree	3

**CONNECTION DATA**

Conductor Cross Section Stranded min.	0.2 mm <sup>2</sup>
Conductor Cross Section Stranded max.	4 mm <sup>2</sup>
Conductor Cross Section AWG/Kcmil min	24 AWG
Conductor Cross Section AWG/Kcmil max	10 mm <sup>2</sup>
Stripping Length	10 mm

**DIMENSIONS**

Height with DIN 32 rail	68 mm
Height with DIN 35 x 15 mm rail	61.3 mm
Height with DIN 35 x 7.5 mm rail	65.4 mm
Length	6 mm
Width (Thickness)	6 mm

**ORDERING INFORMATION**

CAT. NO.	DESCRIPTION	STD. PACK
CXF4	4 sq.mm Feed Through Spring Clamp Terminal Block in Grey colour	50
CXF4BU	4 sq.mm Feed Through Spring Clamp Terminal Block in Blue colour	50
CXF4-0.5	4 sq.mm Compact Fuse Spring Clamp Terminal Block	50
CXF4-0.5Y	4 sq.mm Compact Fuse Spring Clamp Terminal Block Yellow	50
CXF4-1.0	4 sq.mm Compact Fuse Spring Clamp Terminal Block	50
CXF4-2.0	4 sq.mm Compact Fuse Spring Clamp Terminal Block	50
CXF4-2.0R	4 sq.mm Compact Fuse Spring Clamp Terminal Block Red	50
CXF4-4.0	4 sq.mm Compact Fuse Spring Clamp Terminal Block	50

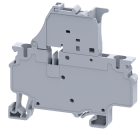
**ACCESSORIES**

IMAGES	CAT. NO.	DESCRIPTION	STD. PACK
	CA701-1M	Din 35 Rail unslotted 1 meter	50
	CA701-2M	Din 35 Rail unslotted 2 meter	50
	CA701-2M-S	Din 35 Rail slotted 2 meter	50
	CA701-1M-S	Din 35 Rail slotted 1 meter	50
	CA701-15-1M	Din 35 Rail 15 deep unslotted 1 meter	50
	CA701-15-1M-S	Din 35 Rail 15 deep slotted 1 meter	50
	CA701-15-2M	Din 35 Rail 15 deep unslotted 2 meter	50
	CA701-15-2M-S	Din 35 Rail 15 deep slotted 2 meter	50
	CA103	EndClamp in Polyamide suitable for Din 35/Din 35-15 rails	50
	CA702	End Clamp in Polyamide 66 suitable for Din 32 / Din 35 / Din 35-15 Rails	50
	CA802	End Clamp in Polyamide suitable for Din 35 / Din 35-15 Rails	50
	JX4/2	Shorting Link for 6 mm wide TB	100
	JX4/3	Shorting Link for 6 mm wide TB	50
	JX4/4	Shorting Link for 6 mm wide TB	50
	JX4/8	Shorting Link for 6 mm wide TB	10
	CA509/K6	Blank Marking Tag	100
	SCS0.6/3.5	Electricians Screwdriver for slotted screws	10

**APPROVALS**



CXF4



**connectwell**  
THE RIGHT CONNECTION

**RATINGS AS PER STANDARDS**

<b>STANDARDS</b>	<b>UL 1059</b>	<b>CSA C.22.2 No:158</b>	<b>IEC/EN60947-7-3</b>
Approvals	UL	CSA	CE
Conductor Cross Section Stranded min.	24 AWG	24 AWG	0.2 mm <sup>2</sup>
Conductor Cross Section Stranded max.	10 AWG	10 AWG	4 mm <sup>2</sup>
Rated Voltage	600 V	600 V	1000 V
Rated Current	10 A	10 A	10 A